

The Betheljahr at a glance

The Betheljahr

- offers the opportunity to get involved with and help others.
- is also an educational and work experience year useful for vocational guidance.
- is recognised as a voluntary year working in the community (FSJ in Germany) and as Federal German volunteer service (BFD).
- provides pocket money of € 690.00 per month.
- social security contributions are paid in full by us.
- provides 30 days holiday.
- competent training and support is given individually and in seminars (25 days).
- you are very welcome even if you are over 27.

Promoted by:



Bundesministerium
für Familie, Senioren, Frauen
und Jugend

Bethel facilities and services in six federal states

Discover your strengths
during your Betheljahr -
on placement from the
Ruhrgebiet northwards!



v. Bodelschwingsche Stiftungen Bethel

Freiwilligenagentur Bethel
Grete-Reich-Weg 13 · 33617 Bielefeld

www.betheljahr.eu

Bethel

Betheljahr

Jetzt ist Deine Zeit!

Voluntary year working
in the community and Federal
German volunteer service

Be a bringer of joy

for a year

with the v. Bodelschwingschen
Stiftungen Bethel

Bethel

menschlich.Bethel

The v. Bodelschwingschen Stiftungen Bethel are one of the largest protestant charitable organisations in Europe. More than 16,000 staff in Bielefeld, Berlin, in the Rhine/Ruhr area and in Lower Saxony dedicate themselves to working with people who, because of illness, disability or their age, need help, assistance and support.

Experiences cannot be handed down - everyone must have them for themselves.

For more than 50 years young people have been getting involved in Bethel in voluntary service. Here the range of volunteering opportunities is particularly varied.



The Betheljahr – your year

The Betheljahr is the German voluntary year in the community (FSJ) and the Federal German volunteer service (BFD) in Bethel and it offers you much more than just a job! Set your own focus and decide entirely according to your strengths and interests in what area your involvement is to help: in supporting and caring for people with disabilities, assisting the elderly, working with children and young people, providing help for people with mental disabilities or in service in other areas such as supported work, in hospitals or transport services.

The Betheljahr promises you a multitude of experience areas where you can become involved in the community. You can have exciting encounters with different people, you can get professional guidance and at the same time support people in various circumstances.

In your Betheljahr you will be supported by the instructors of the Bethel volunteer agency. We will help you to choose the right place of service so that you can gain the experience from which you will really benefit and which will strengthen you for your future life. During your Betheljahr you will be individually supported by a lot of contact persons. Seminars will be conducted where you have an exchange of views with other volunteers, you can share experiences and where everyone has fun together. In order to become acquainted with other areas, during your Betheljahr you can have taster placements in other assignment locations.

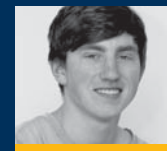
The Betheljahr – Your completely personal year!

“I am doing the Betheljahr because ...



... after my Abitur [university entrance exam] I wanted to do a practical job rather than going straight to university to study. It's worth it!" Kira, 20

... it expands my horizon and I am getting guidance on my career prospects." Frederick, 19



... you meet different people and because it's fun to bring a smile to other people's faces." Melanie, 19

... I can take responsibility and do something meaningful." Lea, 19



... it's not just work but it's also fun and sociable." Marcel, 20

... there's no good reason not to do it." Lisa, 18

